

PANTONE® FASHION COLOR REPORT FALL 2013

[FULL REPORT PDF](#)
[PRESS RELEASE](#)

WOMEN'S COLORS

MEN'S COLORS

DESIGNERS

MUST HAVES

FASHION INFLUENCERS

COLOR ADVICE

FASHION INFLUENCERS

[TAKE OUR COLOR SURVEY](#)

f share

Tweet

g+1



Betsy Burnham

Burnham Design

Which decade has influenced you most?

The decade that most influences me is always the present one. My tastes are always changing, evolving and influenced by whatever is current. Right now I love tonal color combinations shot through with brights, such as Burgundy and shades of Blush and a hit of Hot Pink.

I'm also influenced by the '70s (not surprising since I grew up during that decade) because I love earthy neutrals like Khaki and Olive. I always use these kinds of colors to ground my rooms and provide juxtaposition to the brights that I bring in.

What color advice do you share with your customers?

I encourage my clients to embrace color! I'm always pushing them outside their comfort zones and into pale Purple entry walls, onto Teal linen sofas, and Pink and Orange Turkish rugs. I also remind them that using color doesn't mean painting strong colors on their walls; on the contrary, saturated color becomes much more meaningful and sophisticated when used in conjunction with neutrals. I love White walls hung with bright, colorful, abstract art, a Khaki sofa with Hot Pink pillows or Gray kitchen cabinets with Chartreuse and White rag rugs on the floor. Good use of color is about the right mix and a balance that keeps it both livable and timeless.

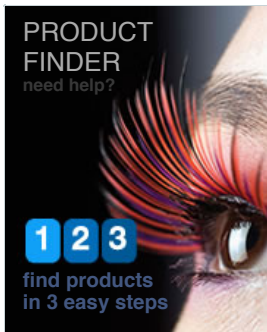
On the web:



Sign Up for our Email Newsletter

visit PANTONE sites

SHARE THIS BLOG RSS myPANTONE FACEBOOK TWITTER



Pantone News

Pantone Reveals Color of the Year for 2014: PANTONE 18-3224 Radiant Orchid
Pantone Reveals Color of the Year for 2014: PANTONE 18-3224 Radiant Orchid Expressive, exotic Radiant Orchid blooms with confidence and warmth...

Pantone Announces Fashion Color Report Spring 2014
Pantone Announces Fashion Color Report Spring 2014 Designers take a modern twist on the traditional to create a colorful equilibrium. ...

Color of the Day: FIR PANTONE 18-5621

find a PANTONE Color



1.866.PANTONE
Pantone LLC is a wholly owned subsidiary of X-Rite, Incorporated. © Pantone LLC, 2014. All rights reserved.

Design | Legal | ISO 9000